

全国免费服务热线 / Nation Free Tel: **400 8813 578**



**德尔法电梯有限公司**  
DELFAR ELEVATOR CO.,LTD.

地址: 浙江省湖州市环渚路915号  
Add: No.915,Huanzhu Road,Huzhou,Zhejiang,China

电话 (Tel) : +86-572-2090666(Chinese Speaking)  
+86-572-2235922(English Speaking)  
传真 (Fax) :+86-572-2090505(Chinese)  
+86-572-2235912(English)

邮编 (P.C) : 313000  
E-mail:delfar@delfar.cn  
Http://www.delfar.cn



扫描二维码, 关注  
德尔法电梯门户网站  
Delfar Webiste QR Code



扫描二维码, 关注  
德尔法电梯微信公众号  
Delfar Wechat QR Code

本书为一般信息类出版物, 我们保留随时更改产品设计和说明的权利。  
本书的任何字句, 无论其字面意思或含义, 对于任何产品及产品的用途和质量, 或者任何购销合同条款的表述与更改均不承担任何责任。  
由于印刷工艺的限制, 实际加工的颜色可能与本册略有不同之处, 最终造型可根据实际材料和色样决定。  
It is an ordinary information publication. We keep the right of alter the product design and description at any time.  
if there is any dispute out of the literal meaning of any product description, use or quality, the description and alteration of any sales contract, our company will not bear any responsibilities there-from.  
Because of the restriction of the printing technology if there is any slight difference between the actually machining color and that from this pamphlet, please take the actual material and color sample as the criterion.

2019.09月份印刷  
2019.09 version

**DELFAR**  
德尔法电梯

# ESCALATOR MOVING WALK

自动扶梯 / 自动人行道

**德尔法电梯有限公司**  
DELFAR ELEVATOR CO.,LTD.

# 安全高效 运行自如

Safe and effective  
with free operation



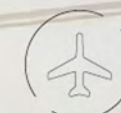
火车站  
Train station



酒店  
Hotel



商场  
Market



飞机场  
Airport

秉承一贯的和谐运载理念，集美学、安全、环保于一身，  
优美的线条凸显高雅气度与风范。  
It carries out the persistently harmonious transport concept.  
It integrates safe aesthetics and environment protection into one.  
Attractive lines show the elegant and imposing demeanour.



## 关于德尔法 About Delfar

德尔法电梯有限公司坐落于长江三角洲经济区腹地、被称为电梯之乡的浙江湖州，东邻上海，南依杭州，是一家集电梯设计、研发、制造、销售、安装、维保为一体的大型专业化电梯企业。

企业现已通过ISO9001国际质量体系认证、ISO14001环境管理体系认证、OHSAS18001职业健康安全管理体系认证。在与时俱进的创新步伐中，引进全球先进的生产设备，实现先进管理方式的深层次转变，并不断在智能化领域深耕，致力于打造未来的智慧工厂。目前产品已涵盖乘客电梯、观光电梯、病床电梯、家用电梯、载货电梯、汽车电梯、小机房电梯、无机房电梯、自动扶梯和自动人行道等系列产品。

企业站在打造百年基业的高度，一直以“自主创新”为核心，不断攀越新的技术高峰，设立技术研发中心，坚持产学研合作的研发模式，不断将自主创新成果推向市场，为技术和人才创新的可持续发展打下坚实的基础。

德尔法电梯将始终秉承“诚信经营、不断进取、奉献社会”的经营理念，风雨携手，共赴辉煌。执行企业长期性的战略发展规划，通过实施品牌战略、人才战略、文化战略、管理战略、国际化战略、信息化战略等，铸就企业核心优势，努力实现振兴民族品牌的梦想。

Delfar Elevator Co., Ltd. is located in Changjiang River Delta Economic Area Hinterland, Huzhou, Zhejiang, China, which has been reputed as "Hometown of Elevator". It is close to Shanghai in the east, to Hangzhou in the south. It is a large size specialized elevator enterprise that integrates the elevator design, research, development, manufacture, sales, installation, repair and maintenance into one.

At present, the enterprise has passed ISO9001 International Quality System Certification, ISO14001 Environment Management System Certification, OHSAS18001 Occupational Health Safety Management System Certification. Along with the innovative steps which keeps abreast with the times, it introduces the advanced international production equipment, fulfills in-depth transformation of advanced management mode. It keeps researching into and developing the intellectual field. It is engaged in constructing future intellectual factory. At present, the products cover passenger elevator, observation elevator, hospital elevator, home elevator, freight elevator, automobile elevator, small machine room elevator, machine room-less elevator, escalator, moving walk series etc.

Standing at a height of building up a centurial career, it is always cored by "independent innovation". It keeps climbing new technical peaks. It sets up "Technical Research & Development Center". It sticks to the research and development mode of production-study-research cooperation. It continuously puts out individual innovation fruits to the markets. It lays a solid foundation for sustainable development of technological and talent innovation.

Delfar Elevator will, as always, adhere to the management ideas of "sincere & creditable management, keep charging, pay contribution to our societies". Let's join hands in order to together creating great splendors. It executes the long-term enterprise strategic development plans. It founds core business advantages through carrying out brand strategy, talent strategy, culture strategy, management strategy, internationalized strategy, information strategy etc. It strives to fulfill the dream of vitalizing a famous national brand.

## 先进技术，卓越品质

Advanced technology excellent quality

### 精密结构之美

高强度金属结构，构建精密尺寸；超意识美学设计，与建筑物完美相融。

### 豪华气质之美

强化玻璃护壁板，豪华装饰胜人一筹。

### 高效安全之美

装有故障显示器，能够准确分析运行状态并显示在屏幕上，确保及时有效地维护。

### 科技感应之美

自动启用/停止运行装置，位于楼层板附近装有自动感应传感器，乘客接近时能自动感应检测并运行，当乘客离开时会自动停止。



### Attraction of precision structure

High intensity metal structure composes precision sizes. Super-consciousness aesthetics design perfectly combines with the building.

### Charm of deluxe manner

Reinforced glass wainscot, superior & deluxe decoration.

### Effective, secure & attractive

Trouble display can accurately analyze running condition and show it in screen. It ensures prompt and effective maintenance.

### Attraction of high-tech induction

Automatic start / stop device is located near floor board. It installs automatic induction sensor. When any passenger gets close, it automatically induces testing and operates. When passenger leaves, it automatically stops.

# 自动扶梯

Escalator

## 先进科研技术，铸就至高品质

德尔法自动扶梯，传承创新，融合人性化至上的理念，精良的梯路、带路设计，运行平稳而舒适；庄重圆润的扶手入口和交通流向灯，别具亮丽动感；扶手、内外盖板、裙板、前沿板的完美衔接以及大圆弧端部扶手回转过渡，浑然天成、大气俊朗。



## 完美配置，大大提高运行效率

- 桁架采用优质型钢，独特的结构，强度高，防腐处理彻底，效果好，寿命长。
- 先进的国际制造工艺及总装工装，保证了梯路的精准。
- 超强的CPU主板电脑控制，实时监控运行状况，发现异常及时自动停止，及时自动记录并显示故障代码。



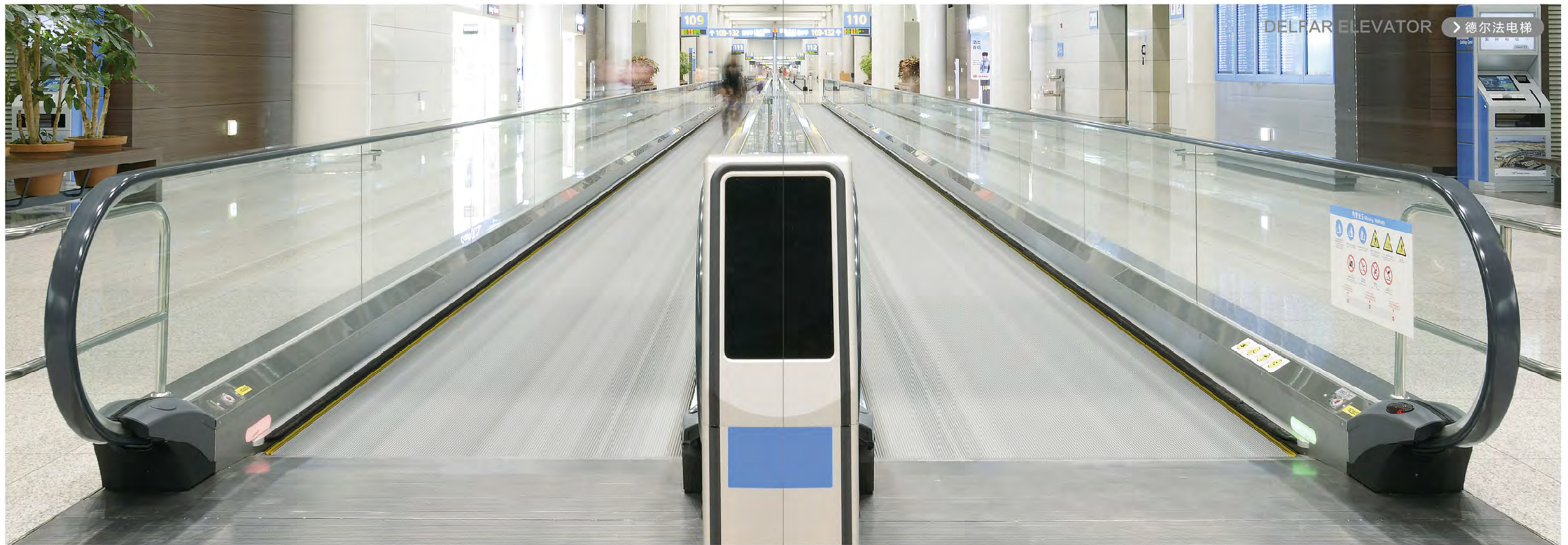
## Advanced scientific research technology founds the excellent quality

Delfar escalator it innovatively combines with human-centered ideas. It has the advanced stairway and belt design. It is smooth and comfortable in operation. Solemn and smooth handrail entry, traffic flow light appear bright and dynamic. It perfectly connects with inner / outer cover plates, skirting plate, frontline plate. It smoothly transits to big arc rotary end handrail.

## The perfect configuration greatly increases the running efficiency

- Truss adopts superior unique structure, high intensity, thorough anti-rusting treatment, fine effect, long life.
- Advanced international manufacture craft, final assembly tooling ensure accurate stairway.
- Super strong CPU main-board computer control executes real-time monitor to running conditions. If it finds any abnormal condition, it automatically stops it, promptly and automatically records it and shows error code.





## 自动人行道 Moving walk

移动之间，悦享生活

德尔法自动人行道不仅能满足人流量大的运输问题，又能满足长距离步行和运送行李车、婴儿车、购物车、残疾车等，使人们在乘坐时特别是在购物之际上下楼有如履平地的感觉，极大地方便了人们的出行和购物，成为各大型超市、机场、展览中心及运输转换站的首选解决方案。

Let's pleasantly enjoy a happy life in movements

Delfar moving walk can not only meet the transportation problem of the large flow of people, and can meet the walking long distances and transport, baggage car, baby carriages, shopping cart, disability and other vehicles, so that people ride especially feeling rulpingde down the stairs on the occasion of the shopping, greatly and people's travel and shopping.



## 节能运行模式

可采用变频控制或自启动方式实现节能。

## 恒稳运行，如履平地

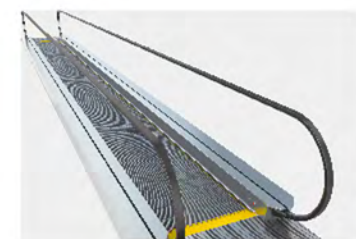
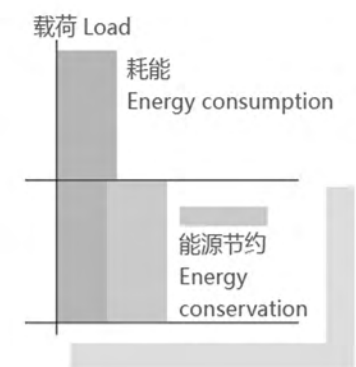
自动人行道噪音低，运行平稳，经久耐用，维修方便，在安全和质量方面一直表现出色。

## Energy saving operation mode

It can adopt variable frequency control or the automatic starting mode to fulfill the energy-saving.

## Constantly stable operation, operating as easily as walking on flat earth.

Moving walk is low in noise, smooth in operation, durable in use, convenient in repair. It always performs very well in the aspects of safety and quality.



# 领先技术，缔造平稳交通运输

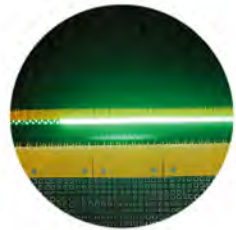
Leading technology produces smooth traffic & transport

## 登梯照明

绿色荧光柔和地从上 / 下端部相邻两节梯级 (踏板) 的啮合齿口中照射出, 以提醒乘客注意梯级进出水平段, 提高乘梯安全。

### Demarcation lamp

Soft and green fluorescent light sends out from the engaging teeth in-between two adjacent steps (treads) in up / down end. It reminds the passengers to pay attention to the step entry / exit horizontal section. It thus enhances the travel safely.

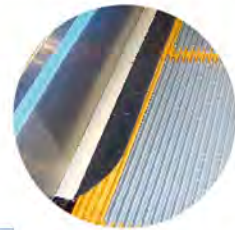


## 围裙板刷

可选用的安全装置。在围裙板和梯级之间装有刷子使乘客的鞋子不会碰到围裙板。

### Skirt panel brush

Optional safety device: brush is installed between step and skirting so that the passengers' shoes do not touch the skirt panel.



## 扶手入口安全保护

当扶手入口有异物夹住时起保护。

### Handrail entry safety protection

Protection against risk of foreign matters being jammed into handrail entry.



## 驱动安全装置

一旦驱动链断裂, 装置切断电动机和制动器电源, 同时驱动棘轮使自动扶梯停止运行。

### Drive Chain Safety Device

Once drive chains are broken, this device shall cut off the power supply of motor and brake and at the same time the drive ratchet shall stop the operation of passenger conveyor.

## 抗菌扶手带

抗菌扶手带能有效防止病菌的传播, 使乘车安全卫生。

### Antibiotic Handrail

The antibiotic handrail can prevent pathogen transmission effectively and the ride be made in safe and sanitary environment.

## 急停按钮

当按此按钮时, 自动人行道停止运行。

### Emergency Stop Button

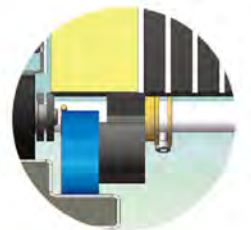
Once this button is pressed, the passenger conveyor comes into an emergency stop.

## 高精度梯路侧导向导轨系统

导轨系统采用大截面带肩导轨, 实现梯级的高精度横向定位, 可以有效的保证梯级与裙板间保持最小的间隙, 降低了裙板与梯级间隙异物夹入的危险。

### Side guide high accuracy step guide rail system

High rigidity big profile guide rail with nose used as transverse step positioning, guarantee the minimum gap between the skirt and step, decrease the possibility of objects clamp in between.



## 梳齿安全装置

梳齿板前端安装在弹簧上。如果有异物夹在运动的梯级和静止的梳齿板之间, 梳齿板会向垂直或后退方向动作, 触发监控梳齿板两侧的安全开关, 自动扶梯就会自动停止。

### Comb Safety Devices

Front ends of comb plates are installed on springs. If any foreign substance is nipped between moving escalator steps and static comb plates; such plates will move in vertical or backward directions, and trigger the safety switches monitoring at both sides of the plates, and the escalators will be automatically stopped.

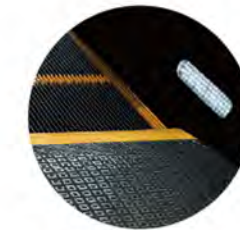


## 自动润滑系统

由微机控制, 在设定的时间里发出加油信号, 自动接通液压泵, 进行加油润滑。

### Automatic Lubricator

It is controlled by micro-computer. It gives lubricating signal within the set period. It automatically connects with hydraulic pump for oiling and lubrication.

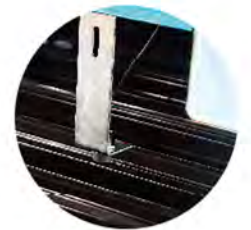


## 梯级缺失保护装置

该监测装置应在驱动站和转向站各设置一个, 以确保无论设备上行还是下行, 因梯级 (踏板) 缺失而导致的缺口都不会出现在入口处。驱动站和转向站所设置监测装置的保护功能应在正常运行状态下, 分别进行验证。该装置动作后, 只有手动复位。

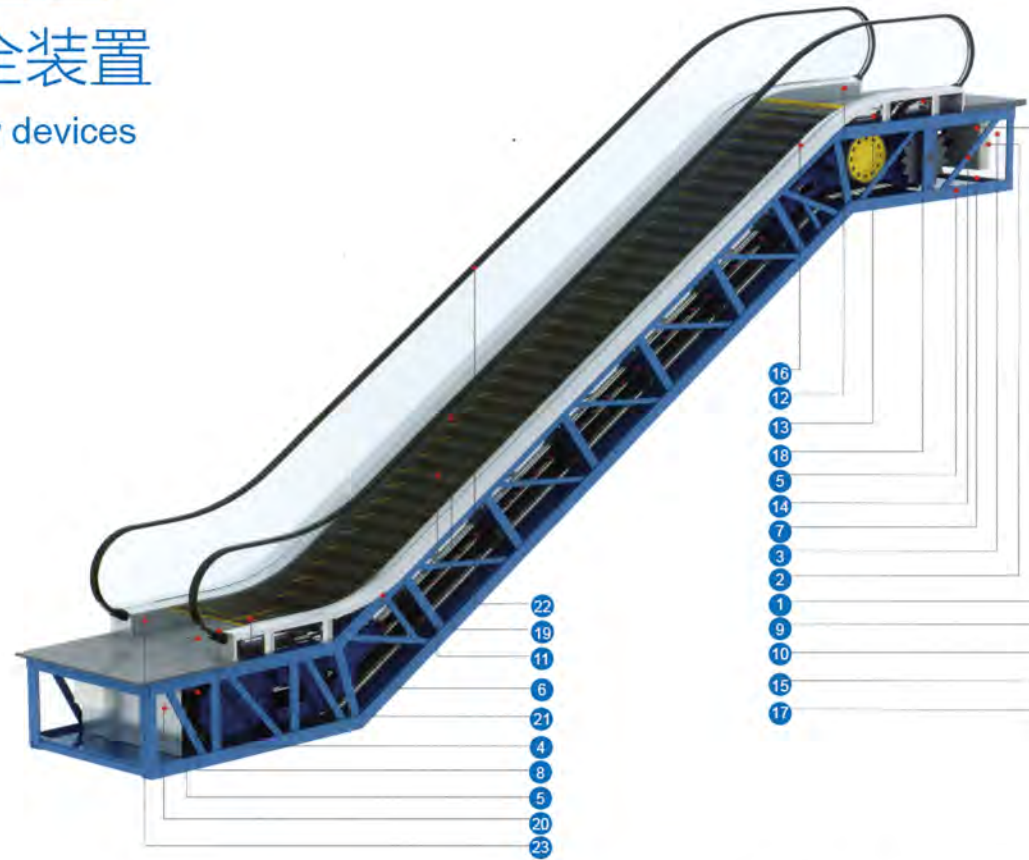
### Step Loss Protection Device

The detector is in driving station and steering station respectively. It ensures that the gap out of step (tread) loss does not appear in the entry in up / down motion. Driving station and steering station sets protective detection functions. They shall be verified respectively under normal operation conditions. After the device acts, it can only be reset manually.



# 安全装置

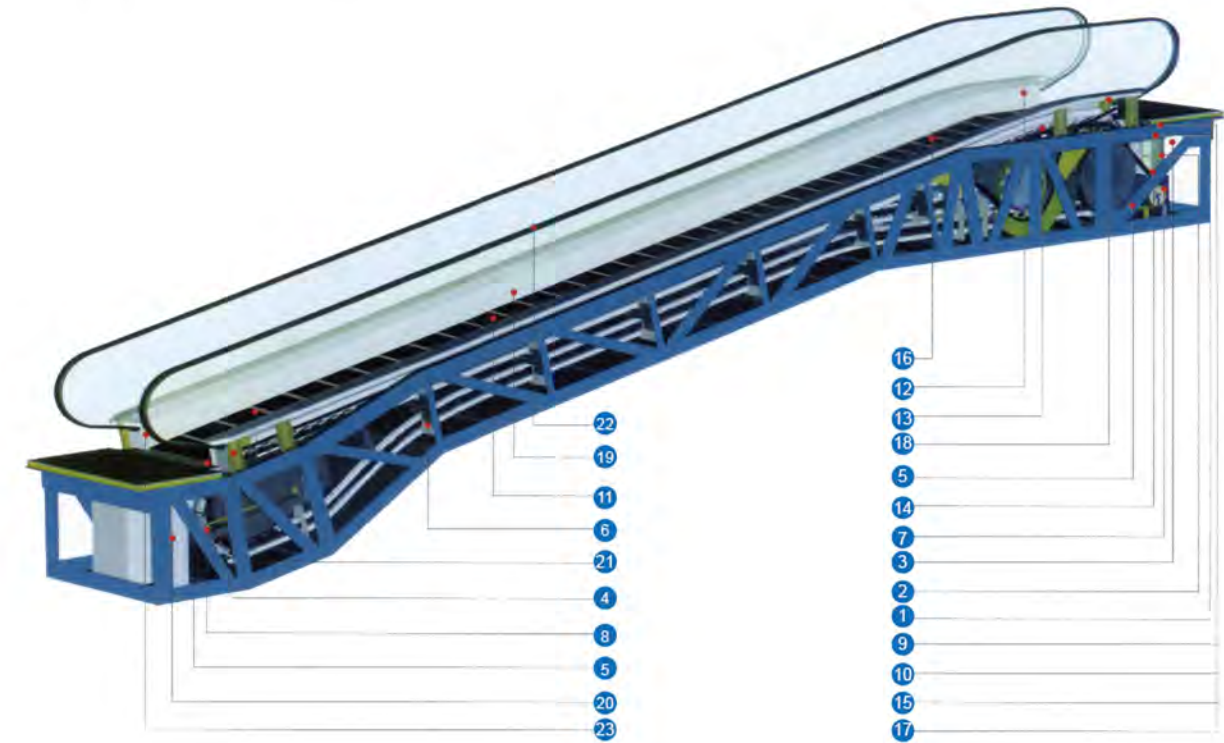
## Safety devices



自动扶梯安全装置  
Safety devices of escalator

# 自动人行道安全装置

## Safety devices of moving walk



标准安全装置 Standard safety device	功能说明 Description of functions
1. 缺相、错相保护: 1.Lack of phase, error phase protection:	如发生缺相或错相, 自动扶梯(自动人行道)将自动停止。 If lack of phase or error phase has been checked out, the escalator (auto-walk) will automatically stop the operation.
2. 电机马达超载保护: 2.Motor over-load protection:	电流超过额定电流的15%时扶梯自动停止运行。 When the current exceeds 15% of the current rating, the escalator will automatically stop the operation.
3. 电器回路保护: 3.Electrical appliance loop protection:	提供自动电路断开装置以保护自动扶梯(自动人行道)的电路和电源部件。 It offers the automatic circuit disconnecting device to protect the circuit and mains components of the escalator (auto-walk).
4. 扶手带入口保护: 4.Handrail inlet protection:	当异物被夹在扶手带入口处时, 自动扶梯(自动人行道)会自动停止运行。 When some foreign substance has been clipped in the handrail inlet, the escalator (auto-walk) will automatically stop the operation.
5. 梳齿板安全保护装置: 5.Comb plate safety device:	当异物被夹入梳齿时, 自动扶梯(自动人行道)将自动停止运行。 When some foreign substance has been clipped in or between the combs, the escalator (auto-walk) will automatically stop the operation.
6. 梯级塌陷保护装置: 6.Step sagging protection device:	当发现梯级有异常的弯曲时, 自动扶梯(自动人行道)会在梯级进入梳齿板前停止运行。 When there is abnormal step bending, the escalator (auto-walk) will stop the operation before the step entering into the comb plate.
7. 驱动链断裂保护: 7.Broken drive-chain safety device:	当驱动链被过度拉伸或断裂时, 自动扶梯(自动人行道)将自动停止运行。 When the drive-chain has been over-stretched or it is broken, the escalator (auto-walk) will automatically stop the operation.
8. 梯级链断裂保护: 8.Broken step chain protection:	当梯级(板)链被过度拉伸或断裂时, 自动扶梯(自动人行道)将自动停止运行。 When the step (plate) chain has been over-stretched or it is broken, the escalator (auto-walk) will automatically stop the operation.
9. 超速保护: 9.Over-speed protection:	当自动扶梯(自动人行道)超速, 将自动停止运行。 When there is over-speed to the escalator (auto-walk), it will automatically stop the operation.
10. 非操作逆转保护: 10.Direction reversal protection:	当逆转操作而违反了预定的运行方向, 自动扶梯(自动人行道)将自动停止运行。 When it comes the unintentional reversal of the direction of travel, the escalator (auto-walk) will automatically stop the operation.
11. 警戒线: 11.Security line:	黄色合成树脂警戒线位于自动扶梯踏板的前部和两边, 以防止乘客踏入相邻梯级的边缘及梯级和围裙板之间, 在梯级两边的警戒线高于踏板表面(自动人行道提供可选黄色喷漆警戒线)。 The yellow synthetic resin security line is located in the front position and two sides of the escalator tread so that the passengers will not tread in-between the edge of the adjacent step and the lift group lengthened skirt panel. The security line on both sides of the step is higher than the tread surface. (The auto-walk offers the selective yellow spray-painted security line.)
12. 紧急停止按钮: 12.Emergency stop button:	当按下该按钮时, 自动扶梯(自动人行道)将停止运行。 When the button has been pressed down, the escalator (auto-walk) will stop the operation.
13. 围裙板保护: 13.Skirt panel protection:	当异物被夹在围裙板和梯级之间时, 自动扶梯(自动人行道)将自动停止运行。 When some foreign substance has been clipped in between the skirt panel and the step, the escalator (auto-walk) will automatically stop the operation.

14. 制动器保护: 14.Brake protection:	当电力不足或任一安全装置动作时, 制动装置将通过弹簧弹力作用使制动功能生效, 使自动扶梯(自动人行道)停止运行。 When the electric force falls short of supply or it acts any of the safety device, the brake function goes into effect by the safety device through the spring resilience action. In this way, the escalator (auto-walk) stops the operation.
15. 检修安全开关: 15.Safety inspection switch:	检修保养时, 防止扶梯启动的安全装置。 It is a safety device to prevent from the escalator starting during the inspection and maintenance.
16. 梯级照明: 16.Step illumination	扶梯上下端, 梯级下部装有照明以提醒乘客注意安全。 Illumination exists in the upper and lower ends of the escalator, in the lower part of the step in order to remind the passengers of the security matters.
17. 启动警铃装置: 17.Alarm bell starting device:	扶梯启动时警铃响起, 以提醒乘客安全。 The alarm bell rings when it starts the escalator in order to remind the passengers of the security matters.
18. 扶手带断裂保护装置: 18.Control device for handrail breakage:	当扶手带断裂时, 自动扶梯将停止运行。 When the handrail is broken, the escalator will automatically stop the operation.
19. 围裙板刷: 19.Skirt panel brush:	可选用的安全装置。在围裙板和梯级之间装有刷子使乘客的鞋子不会碰到围裙板(不仅限于自动扶梯)。 It is a selective safety device. The brush that has been installed between the skirt panel and the step will prevent the passengers from touching the skirt panel. (It is not merely restricted to the escalator.)

可选安全装置 Optional safety device	功能说明 Description of functions
20. VVVF变频控制技术: 20.VVVF variable frequency energy-saving system:	选用频率变换器后, 能有效的降低能源消耗。 When chooses the frequency converter, it can effectively reduce the energy consumption.
21. 梳齿照明: 21.Comb illumination:	照明被安装在靠近梳齿板旁的围裙板上, 为梯级和梳齿板提供照明以便乘客安全的乘坐自动扶梯。 The illumination has been installed in the skirt panel near the comb plate. It offers the lighting for the step and the comb plate. It is more convenient for the passengers to up and down the escalator.
22. 扶手照明: 22.Handrail illumination:	扶手照明安装在扶手支架内, 柔和的光线为运行中的自动扶梯添加了几分灵气。 The handrail illumination has been installed in the handrail frame. The gentle light adds charm to the running escalator.
23. 自动启动/停止: 23.Automatic start/stop:	位于楼层板附近的红外线传感器可以检测到进入楼层板的乘客, 并自动开始运行, 当所有乘客离开后会自动停止运行, 以节约能耗。有扫描传感器和传统的导向杆方式可供选择。 The infrared ray sensor which is near the floor plate can detect the passenger that enter into the floor plate. Then it will automatically start the operation. After all the passengers leave, it will automatically stop the operation again in order to save the energy loss. Scanning sensor and traditional guide rod are available for your choice.



## 标准配置

Standard configuration

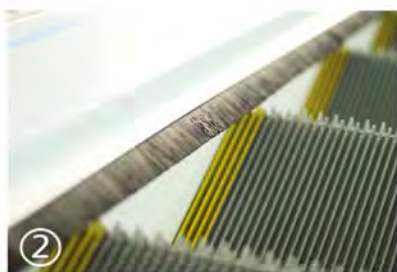


### 扶手入口

新颖、别致、优雅、富有张力并具有现代化流线型扶手带出入口设计造型，赋予自动扶梯以灵活性和亲和力，更具美观，彰显出与之相配套建筑物的尊贵与气派。

### Handrail inlet

The escalator is designed with novel, elegant style, which displays the nobleness and imposing manner of the conveying constructions.

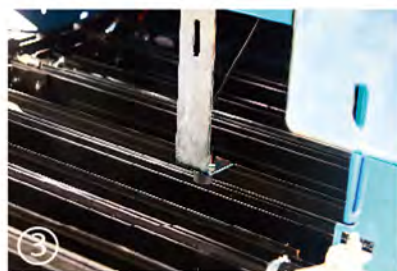


### 防夹装置

安装于围裙板两侧位于梯级上面的防夹装置，可避免乘客的鞋子碰撞围裙板和能安全有效地防止异物被带入梯级。

### Anti-pinch device

Be installed in both sides of skirt guard board, the anti-pinch device installed in stairs to avoid touch of shoes of passengers with skirt guard board, preventing effectively pinch of foreign matters into stairs.



### 梯级缺失保护装置

在自动扶梯梯级回转处装设传感器，当有梯级缺失时自动扶梯将停止运行。

### Protection device for stair deficiency

Sensor is installed in rotation of stairs of escalator; then there is deficiency of stairs, the escalator will stop operation



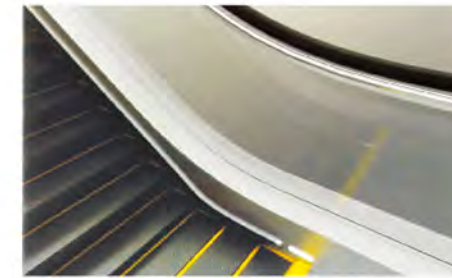
### 立式曳引机

具有平滑的啮合和摩擦减少的特点，确保特别低的噪音，能减少噪音60%以上，与传统的涡轮驱动相比有更高的驱动效率。

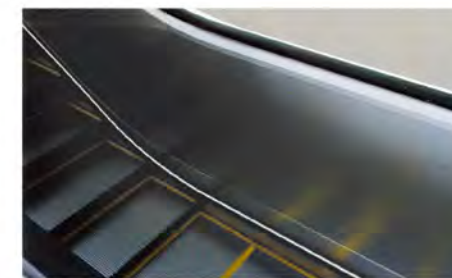
### Table type traction machine

The smooth engagement and the frictional reduction guarantees the extremely low noise. It can reduce more than 60% of the noise. Compared with the traditional worm wheel drive, it is of higher driving efficiency.

### ⑤ 护壁板 Balustrade panel



无色安全玻璃（直扶手标配）（室内型）  
Safety glass colorless  
(Vertical handrail standard) (Indoor type)



不锈钢（斜扶手标配）（公交型）  
Stainless steel (Oblique inclined handrail standard)  
(Public traffic type)

### ⑦ 扶手带颜色 Handrail color



黑色  
Black

### ⑨ 紧急制停按钮 Emergency stop button



遇紧急情况按此按钮停止运行  
Under emergency condition, press this button to stop the operation

### ⑥ 梯级 Step

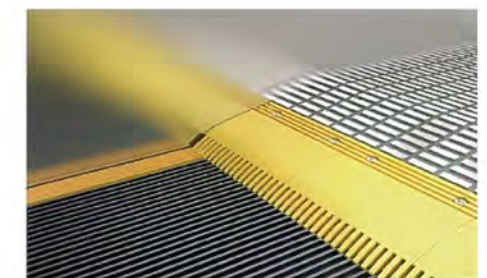


黑色不锈钢（室内梯标配）  
Black stainless steel  
(Standard for indoor escalator)



银灰色铝合金（室外梯标配）  
Silver grey aluminum alloy  
(Standard for outdoor escalator)

### ⑧ 梳齿 Comb



黄色树脂  
Yellow resin

### ⑩ 前沿板、楼层板 Floor plate



不锈钢  
Stainless steel

# 标准功能

Standard function

功能名称	FUNC.NAME	功能描述	FUNC.DESCRPTION
静电保护	Static electricity protection	•消除梯级（踏板）在运行产生的静电 •Eliminate static electricity raised from running of steps.	
急停保护	Emergency stop button	•当需要紧急停车时，按下急停开关起保护 •Push the emergency stop button to stop the escalator/moving walk against emergency raise.	
围裙保护	Skirting protection	•当异物夹入梯级（踏板）与围裙之间起保护 •Protection against risk of foreign bodies being jammed into clearance between steps and skirting.	
扶手入口安全保护	Handrail entry safety protection	•当扶手入口有异物夹住时起保护 •Protection against risk of foreign bodies being jammed into handrail entry.	
驱动连接保护	Main drive chains safety protection	•当驱动链断裂或过长时起保护 •Protection against risk of drive chains being breakage or undue elongation.	
超速保护	Over-speed protection	•当速度高于额定速度的20%时起作用 •Protection against risk of speed being over 20% of rated speed.	
欠速保护	Under-speed protection	•当速度低于额定速度的80%时起作用 •Protection against risk of speed less than 80% of rated speed.	
非操作逆转保护	Un-intentional reversal protection	•当梯级和扶手带的运行方向和指定方向相反时起保护 •Protection against risk of unintentional reversal protection.	
缺、错相保护	Lack of phase, error phase protection	•当动力电源缺相或错相时起保护 •Protection against risk of phase failure.	
短路保护	Short circuit protection	•当动力回路短路时起保护 •Protection against risk of short circuit.	
过载保护	Over-load protection	•当电机持续过载时起保护 •Protection against risk of motor continually over-load.	
梯级（踏板）下陷保护	Step sagging protection	•当梯级（踏板）损坏而下陷时起保护 •Protection against risk of steps being breakage and sagging.	
梯级（踏板）链断裂保护	Broken step chain protection	•当梯级（踏板）链断裂或过长时起保护 •Protection against risk of step chains being breakage or under elongation.	
梳齿安全保护	Comb teeth safety protection	•当异物夹入梳齿时起保护 •Protection against risk of foreign bodies being trapped at the point where the step enter the comb.	
扶手带速度及断带监控	Handrail speed and broken handrail monitor	•检测扶手带速度及断带监控 •It detects the handrail speed and monitors the broken handrail.	
围裙板防夹装置	Skirting anti-clamp device	•在梯级两边的裙板上设置保护刷 •It sets protection brush in the skirting on both sides of the step.	
梯级丢失检测	Step missing detection	•用于探测梯路中梯级的丢失 •It detects the step missing in the stairway.	
制动器打开监测开关	The brake opens the monitor switch	•监测自动扶梯运行时制动器是否打开 •It monitors whether the brake opens or not in during the escalator running.	
盘车轮及盘车轮防护罩打开安全开关	Handwheel and handwheel protection cover open safety	•当需要手动盘车，打开主机上的盘车轮及盘车防护罩时，安全开关将切断安全电路，防止电梯打开 •During the use of handwheel, when open the handwheel and the handwheel protection cover, the safety switch will cut the safety circuit against escalator running.	
楼层板监测开关	Floor-plate monitor switch	•当底坑盖板打开时断开安全电路和停止自动扶梯的安全开关 •When the pit cover plate opens, it cuts off safety circuit and stops the escalator safety switch.	
制动距离的监测	Monitor of brake distance	•监测自动扶梯及自动人行道制停时的距离 •It monitors brake distance of the escalator and auto-walk.	

# 选配功能

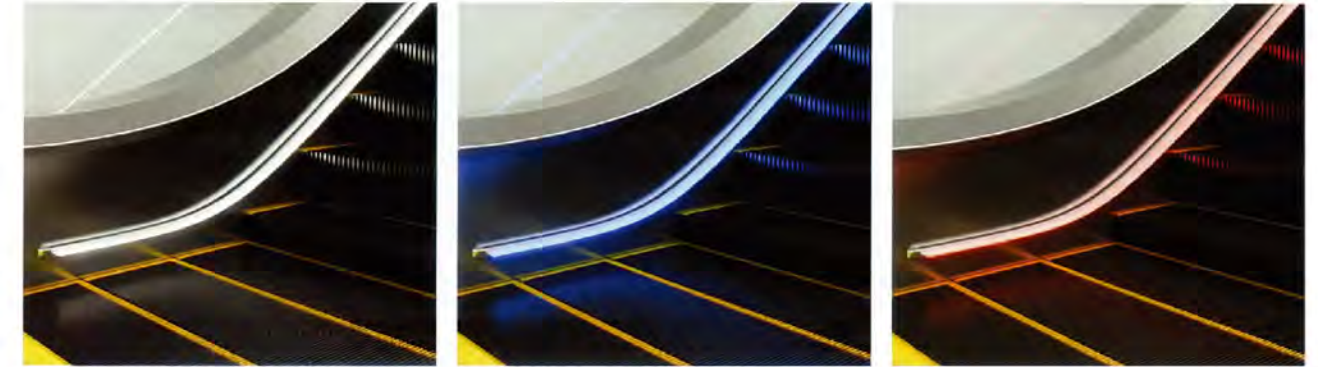
Optional function

## 围裙照明

白色/蓝色/红色

## Skirting panel lighting

White / Blue / Red



## 扶手带颜色

灰色/红色/橙色/蓝色

## Handrail color

Gray / Red / Orange / Blue



## 梳齿照明

白色LED / 黄色LED

## Comb lighting

White LED / Yellow LED

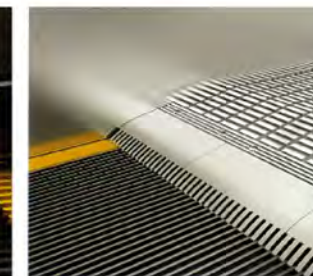


## 梳齿

铝合金

## Comb

Aluminium alloy

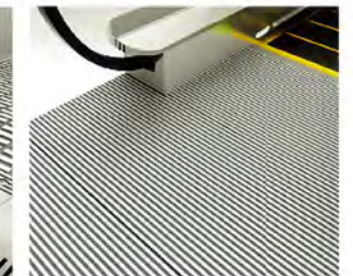


## 前沿板、楼层板

铝合金

## Floor plate

Aluminium alloy



## 完美布局

### Perfect layout

#### 断续布置式

这种布置方式占地面积小，扶梯放置位置灵活，它只能实现客流的单向断续流动，多适用于小型商场和卖场。

#### Interrupted arrangements

Such arrangement covers small space with flexible escalator position. It can only fulfill one-way intermittent passenger flow. It is most applicable for small shopping center and supermarket.



#### 平行连续布置式

这种布置方式主要适用于客流量较大的大型商场和公共交通场所。它能实现较大客流量的双向连续流动；在客流出现单边高峰时，可以按照客流需要调整部分扶梯的运行方向以满足高峰流量。因为无需内侧挡板，相对比较经济。

#### Paralleled & continuous arrangements

Such arrangement is mainly applicable for large shopping center and public traffic occasions with large passenger flow. It can fulfill two-way continuously large passenger flow. If passenger flow has one-way rush hours, it can adjust the running direction of partial escalator in order to meet passenger flow at rush hours. It needs no inside baffle. It is very economical.



#### 连续布置式

这种布置方式比断续布置所需要的空间大一些，它能实现客流的单向连续流动，多适用于中、小型百货商场。

#### Continuous arrangement

Such arrangement is bigger than space required by intermittent arrangement. It can fulfill one-way continuous passenger flow. It is most applicable for medium and small department store and shopping center.



#### 交叉连续布置式

这种布置方式主要适用于大型百货商场和公共建筑，这些地方的楼层之间的运送次数应保持尽可能地少。

#### Cross & continuous arrangements

Such arrangement is mainly applicable for large department store and public building. Delivery times between various floors in those places can be reduced as less as possible.



## 土建安装须知

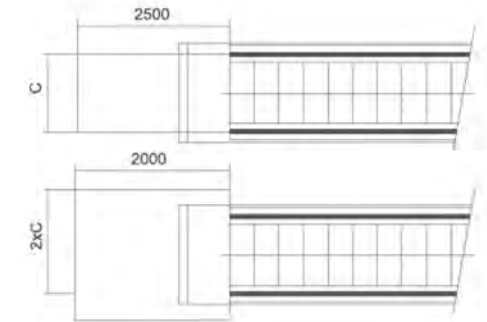
### Installation notice

除了确保合同土建的各尺寸和要求，以下的要求也应达到。

- 为了确保扶梯和人行道的使用安全，自由空间必须在各层站处提供足够大的空间。（参见右最小尺寸图）
- C=扶手带中宽度

Besides complying with the drawing of the contract, attention should also be drawn to the following

- To ensure the safety of the escalator and moving walk, free space should also be large enough in the landing area.(See the minimum size right)
- C=handrail belt width

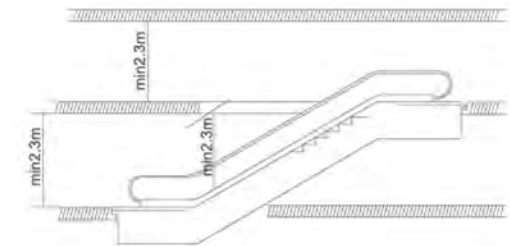


#### 顶空安全距离

- 在梯阶/踏板上的任意点上，至少有2.3米不受任何障碍的安全距离。
- 特别注意！如果一台扶梯上部的另一台扶梯的提升高度<3.3米，就不可能达到2.3米的顶空安全距离。

#### Vertical safety distance

- There should be at least 2.3m upside safety distance staring upward from the step board.
- Notice: if the vertical rise of one escalator, which is installed above another one, is less than 3.3m,the upside safety distance can not reach 2.3m.

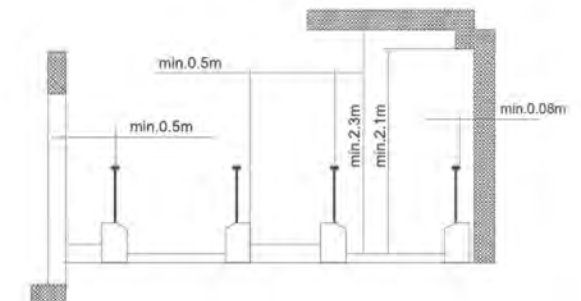


#### 扶梯（人行道）安装必须保证必须的水平安全距离

- 扶手带外边缘至墙体或其他障碍物的水平安全距离必需大于80mm。
- 梯级/踏板区上方垂直安全距离必需大于2.3m。
- 扶手带区上方垂直安全距离必需大于2.1m。
- 对楼面开口或扶梯/人行道交叉布置，扶手带中心到障碍物的水平安全距离必需大于0.5m。
- 如未达到要求，需设置专门的防护装置和防撞挡板。
- 专门的防护装置和防撞挡板，可向德尔法电梯有限公司咨询。

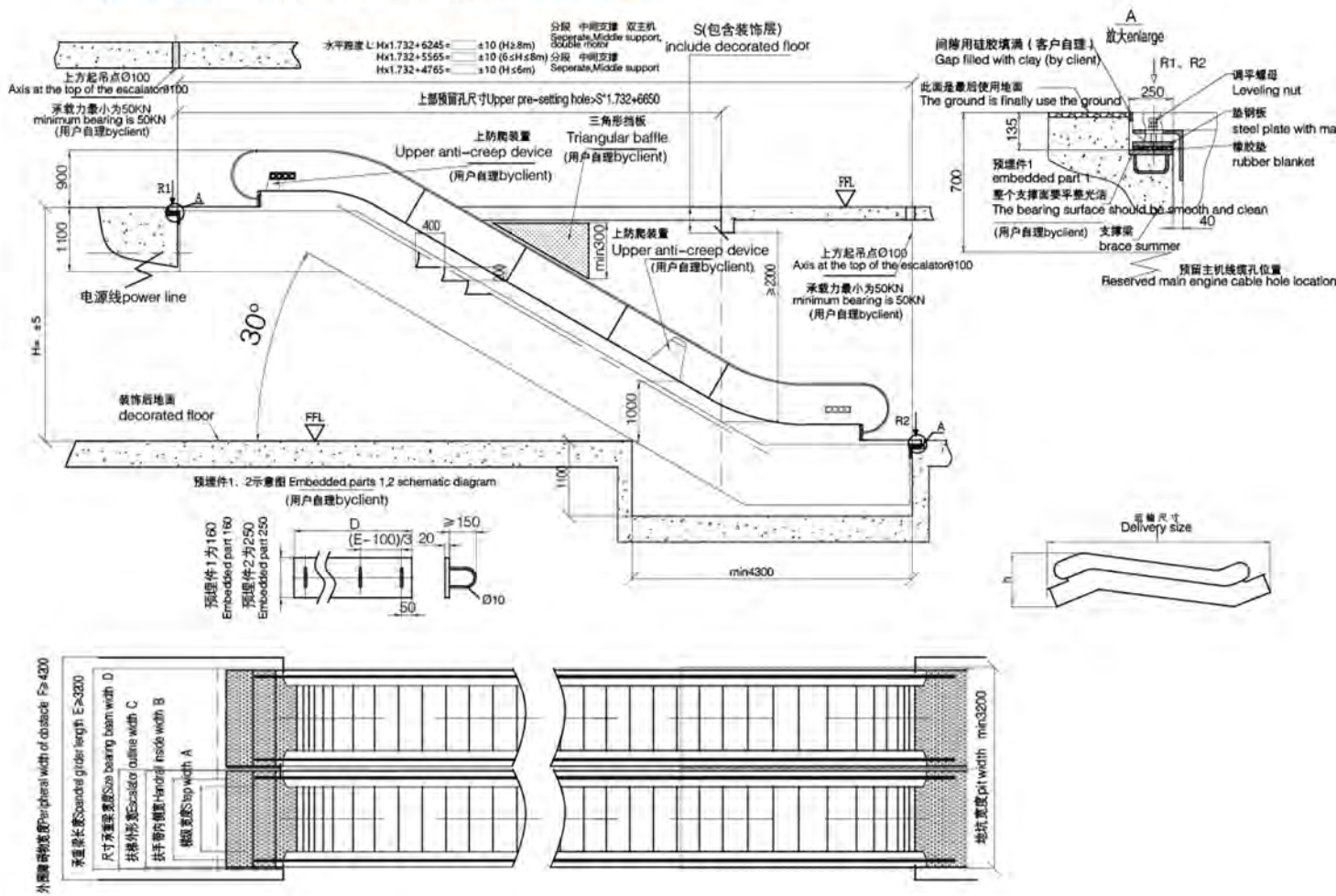
#### Escalators and moving walk horizontal safety distance

- The horizontal distance between the handrail edge and the wall or other objects should be more than 80mm.
- The vertical distance above the step board should be more than 2.3m.
- The vertical distance above the handrail space should be more than 2.1m.
- In case of floor spaces or the cross layout of escalators and moving walk, the safety distance between the handrail center and the object should be more than 0.5m.
- If the above-mentioned requirements cannot be met, a special protection device and a bumper rail should be sued.
- For further information, please contact Delfar elevator company.



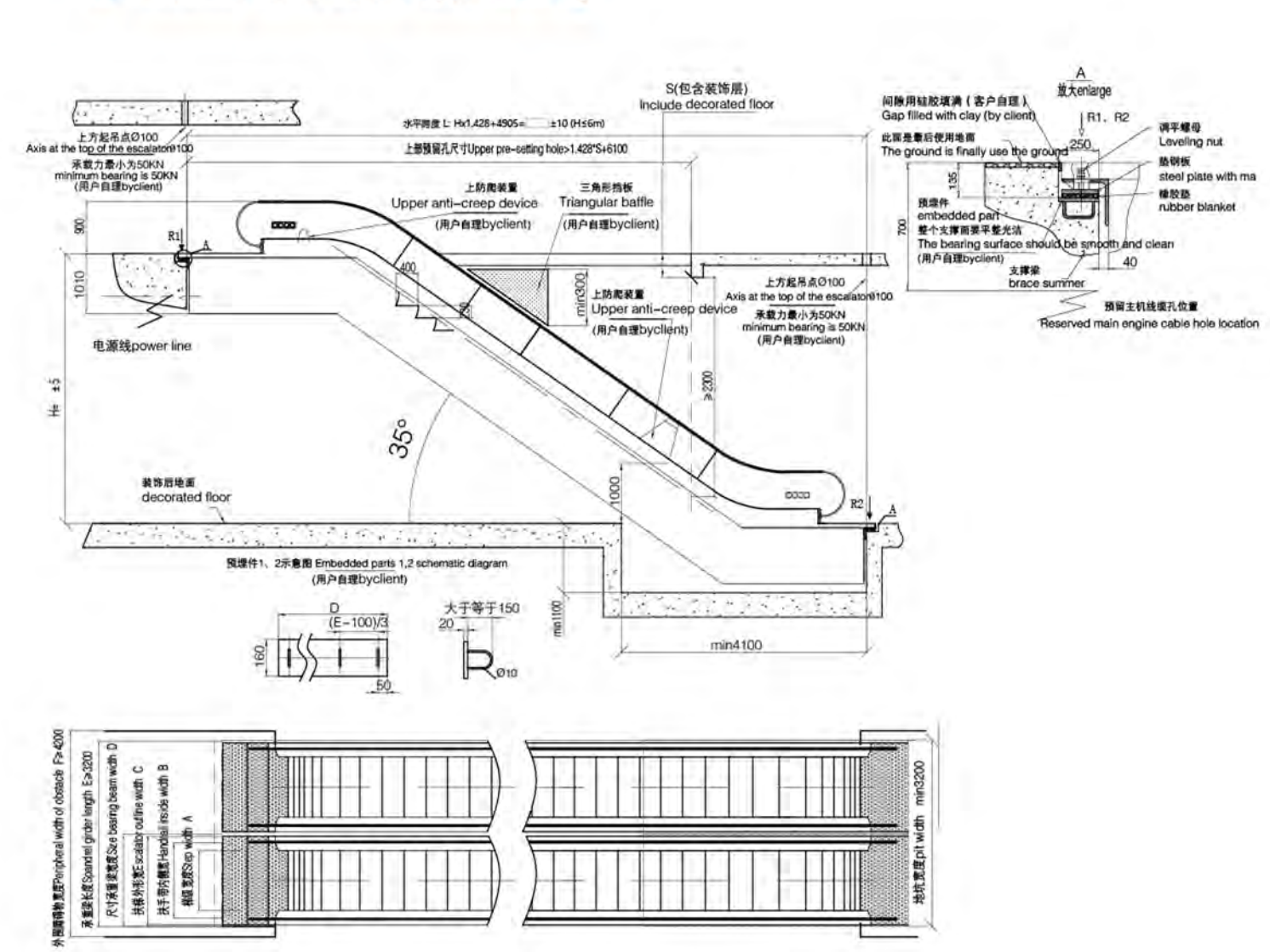
# 30°自动扶梯土建图

30° escalator construction layout drawing



# 35°自动扶梯土建图

35° escalator construction layout drawing



型号 Model	提升高度 Travelling height (mm)	额定速度 (m/s) Rated speed	理论输送能力 (per./h) Capacity	倾斜角 (°) Inclination	水平梯级 No. of horizontal steps	驱动主机 功率 (Kw) Motor power	A (mm)	B (mm)	C (mm)	D (mm)
DE (600/30°)	3000 ≤ H ≤ 6000	0.5	3600	30	2(3)	5.5-8	600	838	1200	≥1300
	6000 < H ≤ 7200				3	7.5-11				
DE (800/30°)	3000 ≤ H ≤ 4800	0.5	4800	30	2(3)	5.5-8	800	1038	1400	≥1500
	4800 < H ≤ 6000				2(3)	8-11				
	6000 < H ≤ 6400				3	11				
	6400 < H ≤ 7200				3	15				
DE (1000/30°)	3000 ≤ H ≤ 4800	0.5	6000	30	2(3)	5.5-11	1000	1238	1600	≥1700
	4800 < H ≤ 6000				2(3)	11				
	6000 < H ≤ 6400				3	11				
	6400 < H ≤ 7200				3	15				
	7200 < H ≤ 8000				3	15				
	8000 < H ≤ 12480				3	2 x 11				

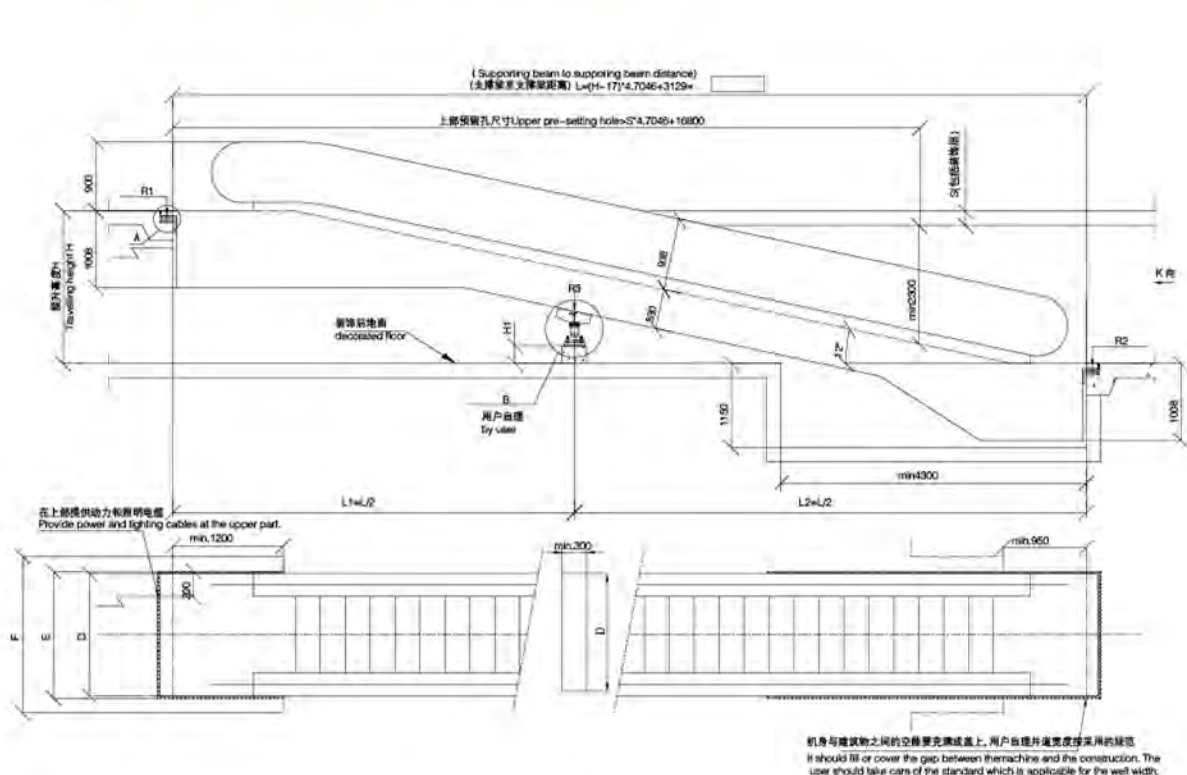
注：上述尺寸供设计参考，具体尺寸以合同签约时提供的土建图为准。  
 Not: Only for reference, final manufacture please follow drawing.

型号 Model	提升高度 Travelling height (mm)	额定速度 (m/s) Rated speed	理论输送能力 (per./h) Capacity	倾斜角 (°) Inclination	水平梯级 No. of horizontal steps	驱动主机 功率 (Kw) Motor power	A (mm)	B (mm)	C (mm)	D (mm)
DE (600/35°)	3000 ≤ H ≤ 6000	0.5	3600	35	2	5.5-8	600	838	1200	≥1300
DE (800/35°)	3000 ≤ H ≤ 5200	0.5	4800	35	2	5.5-8	800	1038	1400	≥1500
	5200 < H ≤ 6000					11				
DE (1000/35°)	3000 ≤ H ≤ 5200	0.5	6000	35	2	8-11	1000	1238	1600	≥1700
	5200 < H ≤ 6000					11				

注：上述尺寸供设计参考，具体尺寸以合同签约时提供的土建图为准。  
 Not: Only for reference, final manufacture please follow drawing.

# 12°自动人行道士建图

12° moving walk construction layout drawing



### 注意事项

1. 当自动人行道装于二楼以上时，地坑取消，土建下部结构与上部对称。
2. 在自动人行道出入口应有充分畅通区域，其宽度不小于1310，深度从扶手带转向端到前面障碍物不小于2500。
3. 自动人行道扶手带至任何障碍物不小于500。
4. 由用户提供一电阻小于4欧姆的接地装置。
5. 当提升高度  $H \leq 2600$  时取消支撑 R3、R4；
6. 当提升高度  $2600 < H \leq 5800$  时，只需支撑 R3；且  $L1=L2=L/2$
7. 当提升高度  $5800 < H \leq 7800$  时，需支撑 R3、R4。且  $L1=L2=L3=L/3$
8. 此图为现行12°标准人行道士建尺寸，若由于土建无法按标准执行，请及时联系德尔法电梯扶梯技术部。
9. 此图单位均为毫米，若有变更，恕不通知。

### Note

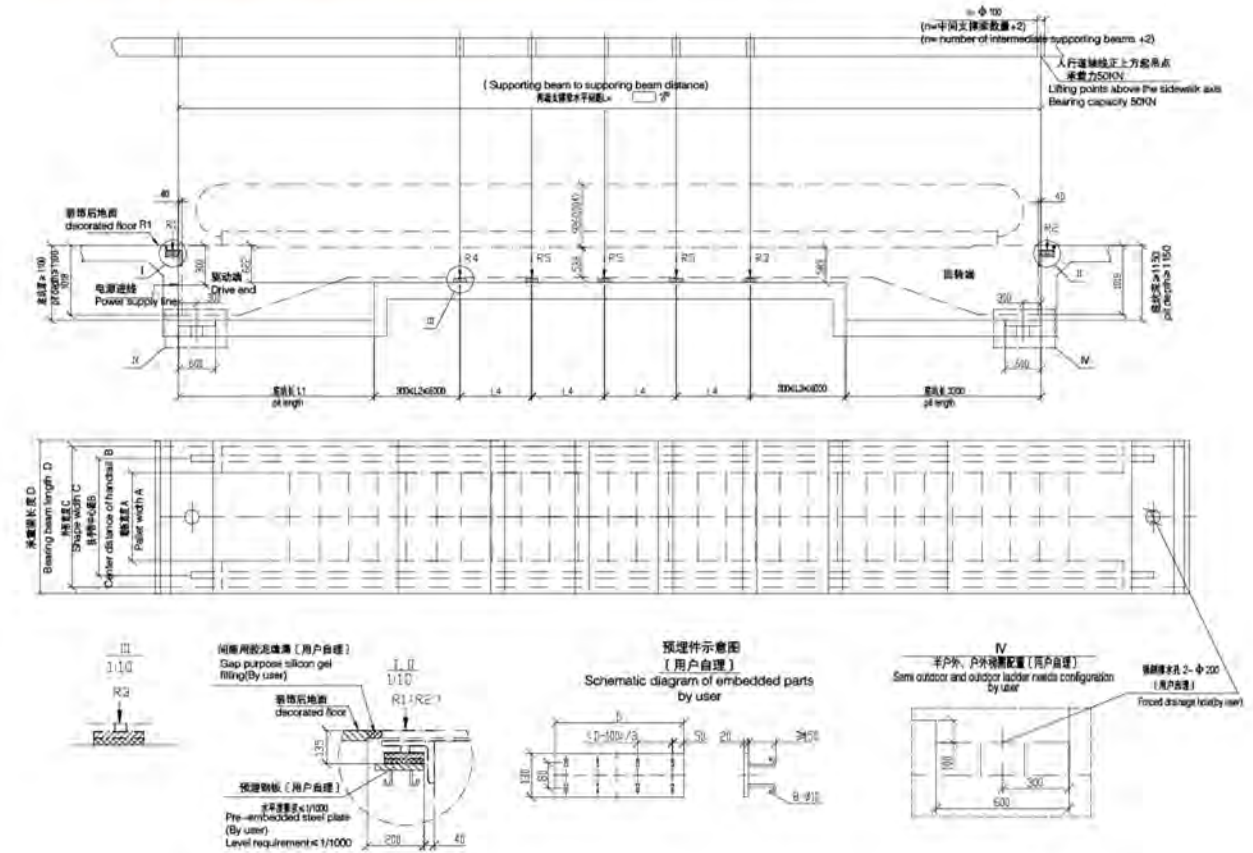
1. When the moving walk is installed on the second floor or above, the pit will be cancelled and the lower structure of the civil works is symmetrical with the upper part.
2. There should be a sufficient clear area at the entrance and exit of the moving walk, the width of which is not less than 1310, and the depth from the steering end of the handrail to the front obstacle is not less than 2,500.
3. The distance from the handrail strap to any obstacle is not less than 500.
4. A grounding device with a resistance less than 4 ohms is provided by the user.
5. Cancel support R3, R4 when lifting height  $H \leq 2600$
6. When the lifting height is  $2600 < H \leq 5800$ , only support R3; and  $L1=L2=L/2$
7. When the lifting height is  $5800 < H \leq 7800$ , support R3R4, and  $L1=L2=L3=L/3$
8. This picture shows the current 12° standard moving walk civil construction size. If the civil construction cannot be carried out according to the standard, please contact the Delfar Elevator Escalator Technology Department in time.
9. The figures are in millimeters and are subject to change without notice.

电机功率 (KW)	提升高度 H Travelling height H	提升高度 H Travelling height H	提升高度 H Travelling height H	提升高度 H Travelling height H
Motor power (KW)	1500-3000	1x7.5	1500-3800	1x7.5
	3000-4800	1x11	3800-6000	1x11
	4800-6000	1x15	6000-7600	1x15
中心支撑高度 H1 Central support Height H1	当提升高度为：2600<H<5800时，须用一个中心支撑，此支撑高度为H1=H/2-780	2x11	7600-8000	2x11
	When the lifting height is 2600<H<5800, a center support shall be used, and the support height is $H1=H/2-780$ .			
	当提升高度为：5800<H<7800时，须用两个中心支撑，第一个中心支撑高度H1=H/3-881，第二个中心支撑高度为H2=2H/3-681			
中心支撑高度 H2 Central support Height H2	当提升高度为：5800<H<7800时，须用两个中心支撑，第一个中心支撑高度H1=H/3-881，第二个中心支撑高度为H2=2H/3-681			
	When the lifting height is 5800<H<7800, there are two center supports, first center support height is $H1=H/3-881$ and second center support height is $H2=2H/3-681$ .			
动力电源 Power supply	用户提供380V AC 50Hz三相五线电源，电梯启动时，电压降≤10%，正常情况下，电梯运行时电压降≤5%；最大启动电流应小于额定电流的3.5倍。			
	The user provides 380V AC, 50Hz three-phase five wire power supply. When the sidewalk starts, the voltage drop is less than 10% normal conditions, the voltage drop of the sidewalk is less than 5%, and the maximum starting current should be less than 3.5 times the rated current.			

技术说明 (型号:DM) Technical description			
倾角 $\alpha$ Angle of inclination $\alpha$		12°	
速度 V Speed V		0.5m/s	
梯级宽度 A Step width A	1000	800	
扶手带内径 B Inner distance of handrail B	1158	958	
扶手带中心距 C Center distance of handrail C	1238	1038	
人行带外形宽度 D Moving walk outline width D	1700	1400	
承载梁长度 E Bearing beam length E	1660	1500	
外圈障碍宽度 F Outer obstacle width F	2310	2110	
地坑宽度 G Pit width G	1700	1500	
支反力 R1 (KN) Reaction force R1 (KN)	0.009xL1+22	0.0078xL1+19	
支反力 R2 (KN) Reaction force R2 (KN)	0.009xL2+10	0.0078xL2+9	
支反力 R3 (KN) Reaction force R3 (KN)	0.0117x [L1+L2]	0.01014x [L1+L2]	
支反力 R4 (KN) Reaction force R4 (KN)	0.0117x [L2+L3]	0.01014x [L2+L3]	

# 0°自动人行道士建图

0° moving walk construction layout drawing



### 注意事项

1. 当使用环境温度低于0°C (户外或半户外) 时，需增加加热器，加热器总功率请咨询德尔法电梯扶梯技术部；
2. 自动人行道上出入口应有充分的畅通区域，其宽度至少为扶手带中心线间距离，纵深尺寸从扶手转向端算至少为2.5m，如该区域宽度为扶手带中心距离两倍以上，其纵深尺寸允许减至2m；
3. 如有地坑，应防水处理，用户自理；
4. 自动人行道扶手带至任何障碍物≥500，否则在扶手带与梯板的三角处加设防护板，用户自理；
5. 用户提供动力电源，接地电阻值小于4欧姆的接地装置，在上承载梁下，且留2米进线余量，电机功率按左表；
6. 室内自动人行道上出入口的光照度至少为50Lx，户外、半户外自动人行道上出入口的光照度至少为15Lx (用户自理)；
7. 如中间支撑承重梁采用钢架结构，请咨询德尔法电梯扶梯技术部；
8. 自动人行道两侧与底部的装潢由用户自理；

### Note

1. When the ambient temperature is lower than 0 ° C (outdoor or semi-outdoor), add a heater. Please consult Delfar Elevator Escalator Technology Department for the total heater power;
2. The upper and lower entrances and exits of the moving walk shall have sufficient clear areas, the width of which shall be at least the distance between the centerlines of the handrails, and the longitudinal dimension shall be at least 2.5m from the handrail to the end, if the width of the area is more than twice the center distance of the handrails, its depth dimension is allowed to be reduced to 2m;
3. If there is a pit, it should be treated with water, and the user should take care of it himself;
4. The distance between the handrail belt of the moving walk and any obstacles should be ≥ 500. Otherwise, a protective plate should be added at the triangle of the handrail belt and the floor, and the user should take care of himself;
5. The user provides the power supply, the grounding device with the grounding resistance less than 4 ohms, under the upper load-bearing beam, and leaving the remaining line of 2 meters, the motor power is according to the left table;
6. The illumination of the upper and lower entrances and exits of the indoor moving walkway is at least 50Lx, and the illumination of the upper and lower outdoor entrances and exits of the outdoor and semi-outdoors is at least 15Lx (users take care of themselves);
7. If the intermediate support load-bearing beam is made of steel frame structure, please consult the Delfar Elevator Escalator Technology Department;
8. The decoration on both sides and bottom of the moving walk will be taken care of by the user;

高级宽度 Pallet width	1000		800		
中间支撑间距 L4 Intermediate support spacing L4	6000	10000	6000	10000	
支反力 (KN) Support	R1	40	38	35	
	R2	34.5	34	32	
	R3	62.5	78.5	52	64.5
	R4	63.5	79.4	54	66.6
	R5	48	79.4	40	66.6
电机功率 Motor power / Rated current	输送长度 L Transport length L	41.8m	输送长度 L Transport length L	41.8m	
	1000-30000	7.5KW	1000-30000	7.5KW	
	30000-418000	11KW	30000-418000	11KW	

技术说明 (型号:DM) Technical description			
倾角 $\alpha$ Angle of inclination $\alpha$		0-6°	
速度 V Speed V		0.5m/s	
踏板类型 Pallet type	铝合金 (室内/半户外/户外) Aluminum alloy (indoor / half door / outdoor)		
踏板宽度 A Pallet width A	1000	800	
扶手带中心距 B Center distance of handrail B	1238	1038	
外形宽度 C Shape width C	1600	1400	
承载梁长度 D Bearing beam length D	≥ 1700	≥ 1500	
安装场合/驱动方式 Installation occasion / drive mode	长度 L1 Length L1		
室内/变频 Indoor / frequency conversion	4000	4000	
半户外/变频 Half door / star triangle	4600	4600	
户外/变频 Outdoor / star triangle	4000	4600	
户外/变频 Outdoor / frequency conversion	4600	4600	
动力电源 Power supply	用户提供 380V AC 50Hz三相五线电源，人行启动时，电压降≤10%，正常情况下，人行运行时电压降≤5%；最大启动电流应小于额定电流的3.5倍。		
	The user provides 380V AC, 50Hz three-phase five wire power supply. When the sidewalk starts, the voltage drop is less than 10% normal conditions, the voltage drop of the sidewalk is less than 5%, and the maximum starting current should be less than 3.5 times the rated current.		

# 物联网技术，全方位服务

Internet of things technology, omnidirectional service

## 360° 全方位零距离服务

覆盖全国范围的售后服务网络体系，专业的服务团队，专心周到的服务，专家一对一的技术指导，为电扶梯提供24小时全天候的紧急故障处理，及时为客户提供完整的电梯解决方案，让全球用户感受到德尔法电梯快捷、满意、长久的服务。

## 360° all-round zero-distance service

It provides the elevators and escalators with 24-hour all-weather emergency trouble disposal by nation-wide after-sale service network system, professional service team, attentive and considerate service, one-to-one technical instruction from specialists. It promptly supplies the complete elevator solution plans for vast clients. Therefore broad global users can better-experience the prompt, convenient, satisfactory, lasting services from Delfar Elevator.

## 物联网技术为服务加速度

德尔法运用最先进的物联网技术，通过特制的感应器，采集电梯相关运行数据，通过微处理器进行非常态数据分析，可随时掌控每一台电梯的动态信息，实时更新每台电梯的信息库，实现电梯故障报警、困人救援、日常管理、质量评估、隐患防范、多媒体传输等功能的综合性电梯管理平台。

## Internet of Things speeds up the excellent services

Delfar utilizes the most advanced Internet of Things technology. It collects related elevator running data through specially-made inducer. It carries out abnormal data analysis through micro-processor. It grasps dynamic information of each elevator at all times. It makes real-time renewal to information base. It fulfills comprehensive elevator management platform with elevator trouble alarm, rescue to passenger-trap, daily management, quality appraisal, prevention to any hidden danger, multi-media transmission functions etc.



专业团队  
Professional team



快捷服务  
Convenient service



服务专线  
Service line



专业维保  
Professional maintenance

